



Inflammation, Microbiome & Alimentation  Gastro-Intestinal & Neuropsychiatric Effects



# IMAGINE NETWORK

Dr. Paul Moayyedi  
Network Lead Principal Investigator



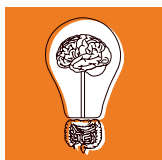
# IMAGINE Network | Who We Are

- Research network of 17 hospitals/universities and 75 researchers across Canada.
- Investigating the interactions between inflammation, microbiome, diet and mental health in patients with **inflammatory bowel disease (IBD)** and **irritable bowel syndrome (IBS)**.
- One of five chronic disease networks in CIHR's SPOR initiative.



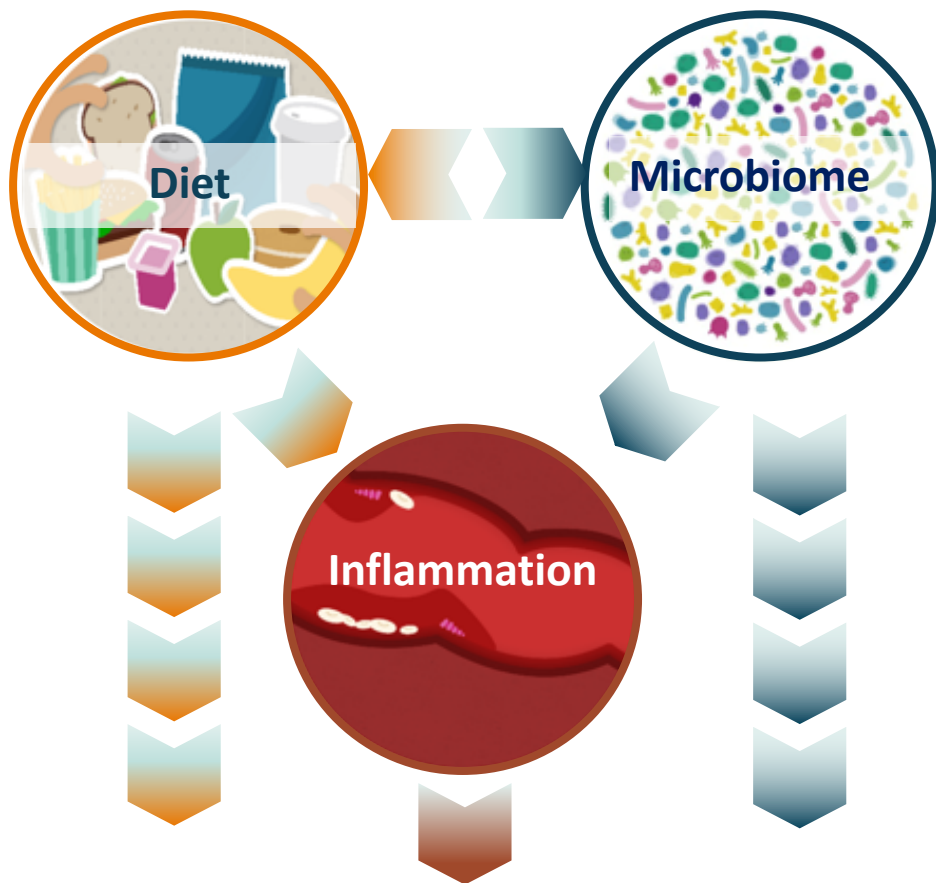


Inflammation, Microbiome & Alimentation



Inflammation, Microbiome & Alimentation

## Hypothesis Summary



IMAGINE brings together gastroenterologists, neuroscientists and psychiatrists, currently working in isolated silos, into a network focused on:

- Brain-gut connection
- Microbiome changes in GI & associated psychiatric disorders

### OUR MISSION

Transform the management of IBD and IBS and associated mental health issues with these diseases.

# IMAGINE | Network Activities



Inflammation, Microbiome & Alimentation Gastro-Intestinal & Neuropsychiatric Effects

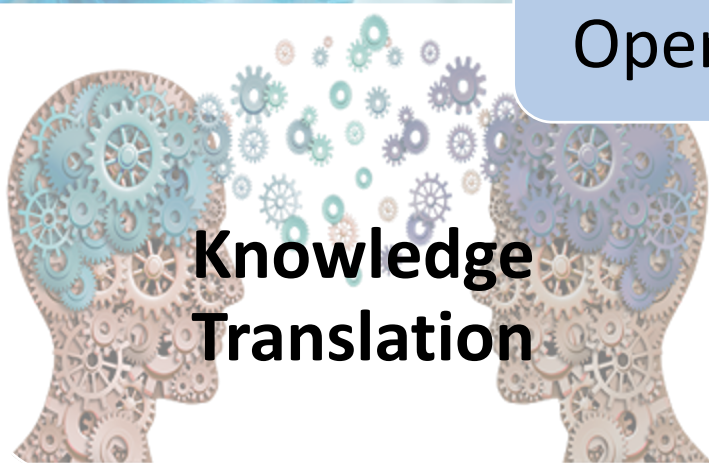


**Research**



**Patient Engagement**

**Core  
Operations**



**Knowledge  
Translation**



**Capacity Building**





## MAIN COHORT: MIND AND GUT INTERACTIONS COHORT (MAGIC) STUDY

### Microbiome

- Fecal Transplantation & Antibiotics in UC
- Fecal Transplantation in CD
- Fecal Transplantation in IBS w/ Major Depression
- Fecal Transplantation in Pouchitis

### Diet & Environment

- Gluten in IBS Pilot
- FODMAP Diet in IBS Pilot
- Diet Intervention in IBS
- Biomarkers in IBS Diet
- Diet Predicts Therapy in peds IBD

### Psychiatry/ Mental Health

- iCBT in IBD
- Brain Imaging in IBD (PET, NIRS, TMS)
- Stress Reduction in IBD
- Suicide Risk in IBD
- Mental Health Assessment in Routine IBD Care

### Patient Engagement

- Patient Treatment Preferences
- Recruitment & Retention
- Psychosocial Relationship with Food
- Patient Support Tools
- Citizen-targeted website

### Health Services/PACE

- Telemedicine in IBD
- Quality Indicators in IBD care / Global Rating Scale in IBD
- e-Clinical Care Pathways
- Patient Symptom Monitoring App

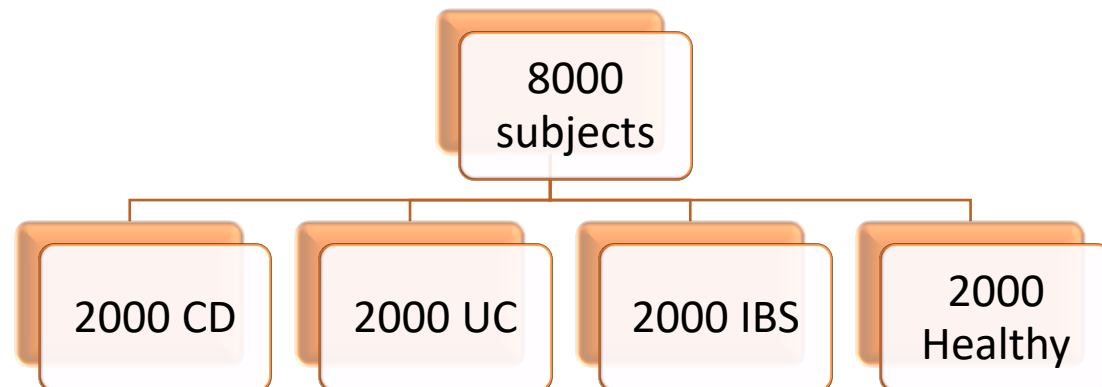
### Sex & Gender

- Epidemiology Study on Gender, Referral Patterns and Outcomes
- Assessing Physician/Patient Gender on Outcomes and Health Care Utilization
- Patient/Physician Attitudes, Experiences & Expectations of Male vs Female Patients

# IMAGINE | Mind And Gut Interactions Cohort



- Understand how genes, diet and mental health impact the gut microbiome in people with IBD & IBS
- Subjects assessed annually for 4 years and submit blood, urine and stool samples & complete online questionnaires
- Start Date: Oct 2017
- Sites: 15 active sites; 2 pending sites [Montreal + SickKids (CIDsCaNN subsites)]



U  
Z  
O  
A  
Z  
Inflammation, Microbiome & Alimentation



# IMAGINE | Main Cohort Study – Study Design



	ANALYSIS	RESEARCH CORE LEAD
<b>PATIENT QUESTIONNAIRES</b>	Demographic & Health Status	PHRI (All)
<b>BLOOD</b>	Inflammatory markers	Queen's (Dr. Vanner) & McMaster (Dr. Bercik)
	Genetics	University of Montreal (Dr. Rioux)
<b>STOOL</b>	Microbiome	McMaster (Dr. Surette)
<b>URINE</b>	Metabolomics	U of Alberta (Dr. Madsen)



Inflammation, Microbiome & Alimentation  Gastro-Intestinal & Neuropsychiatric Effects



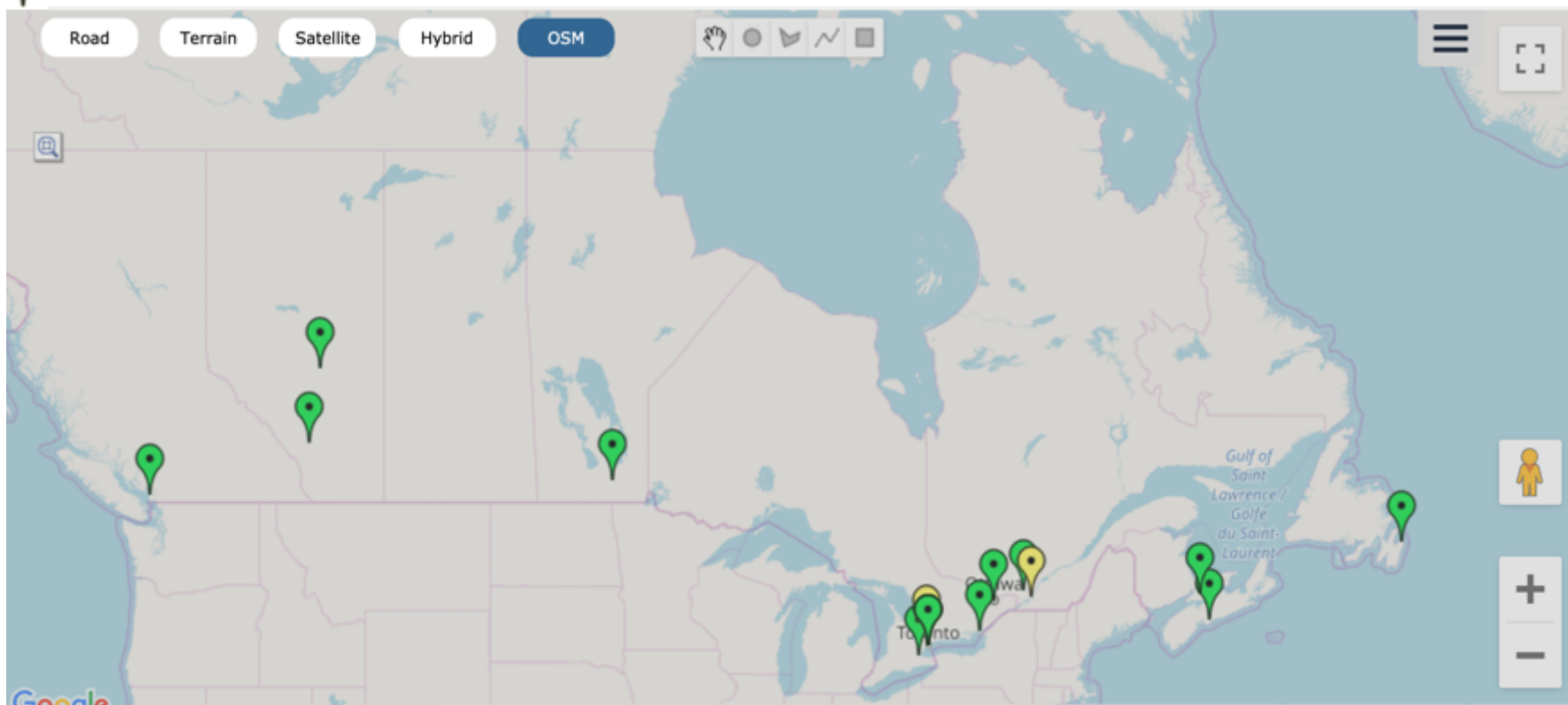
# MAGIC | Recruitment Sites



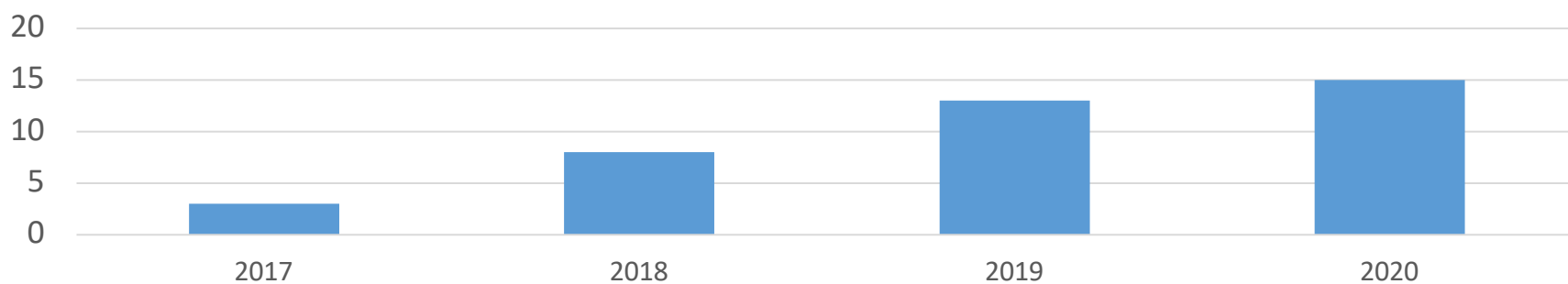
Currently Recruiting



Ethics/legal contracts pending (Sick Kids/CIDSCaNN sites, Montreal)

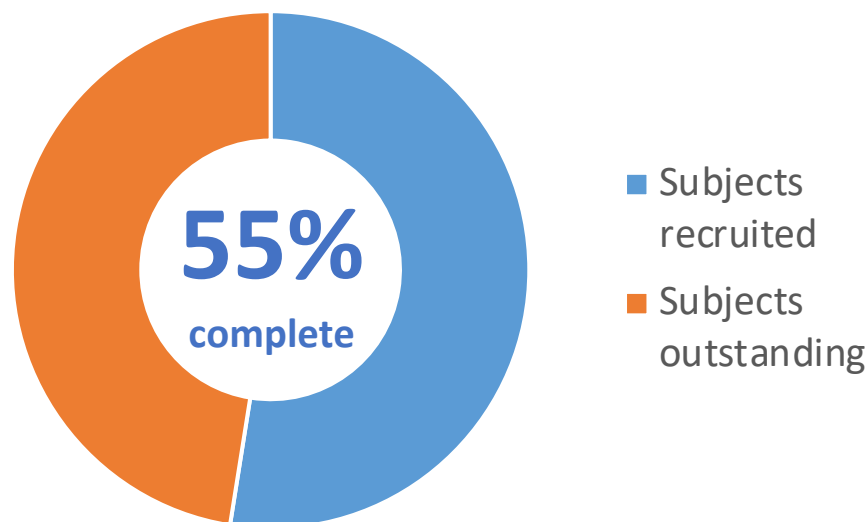


Number of IMAGINE recruitment sites





# MAGIC | Recruitment Totals (as of October 26, 2020)



	Recruited	Target	% Complete
CD	1751	2000	88%
UC	1118	2000	56%
IBS	754	2000	38%
Healthy	752	2000	38%
Total	4426	8000	55%

# MAGIC | Recruitment Totals (as of October 2020)

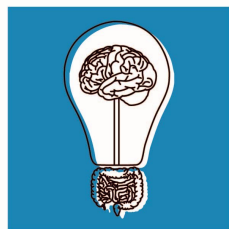
Site	Greenlight Date	Start Date	Average Monthly Recruitment <sup>1</sup>	Total
21 McMaster University Medical Centre - Hamilton	2017-10-11	2017-10-11	22.8	844
21A St. Joseph's Healthcare, West 5th - Hamilton	2019-07-12	2020-03-10	0.4	3
21B St. Joseph's Healthcare, Downtown - Hamilton	2020-10-05			0
22 IBD Clinical & Research Centre - Winnipeg	2017-11-06	2017-11-15	20.5	733
23 Hotel Dieu Hospital - Kingston	2017-10-25	2017-12-06	14.1	497
24 University of Calgary - Calgary	2018-03-19	2018-03-20	25.1	795
25 University of Alberta - Edmonton	2018-03-07	2018-03-23	23.1	730
26 IWK Health Centre - Halifax	2018-03-07	2018-06-25	3.7	105
27 NSHA, Centre for Clinical Research - Halifax	2018-06-21	2018-07-19	12.1	335
28 UHN Toronto Western Hospital - Toronto	2018-06-04	2018-06-19	2.1	59
29 Memorial University - St. John's	2019-06-06	2019-07-19	2.8	43
30 The Ottawa Hospital - Ottawa	2019-04-29	2019-05-02	6.5	118
31 GI Research Institute - Vancouver	2019-04-01	2019-05-10	4.1	73
32 Mount Sinai Hospital - Toronto	2019-09-25	2019-10-18	2.1	26
33 MUHC IBD Research Centre - Montreal	2019-08-23	2019-08-29	4.6	65
34 Centre Hospitalier de l'Université de Montréal - Montreal	2020-03-10			0
36 University of Alberta - Edmonton PEDS	2020-02-13			0
<b>Total</b>				<b>4426</b>



Inflammation, Microbiome & Alimentation Gastro-Intestinal & Neuropsychiatric Effects



# IMAGINE | MAGIC – Study Progress



Mind And Gut Interactions Cohort Study — IMAGINE Network

Study Design

Ethics & Legal

Recruitment

Analysis

Dissemination



**15+2**

ACTIVE & PENDING  
RECRUITMENT SITES



**4,426**

SUBJECTS  
RECRUITED



**18,783**

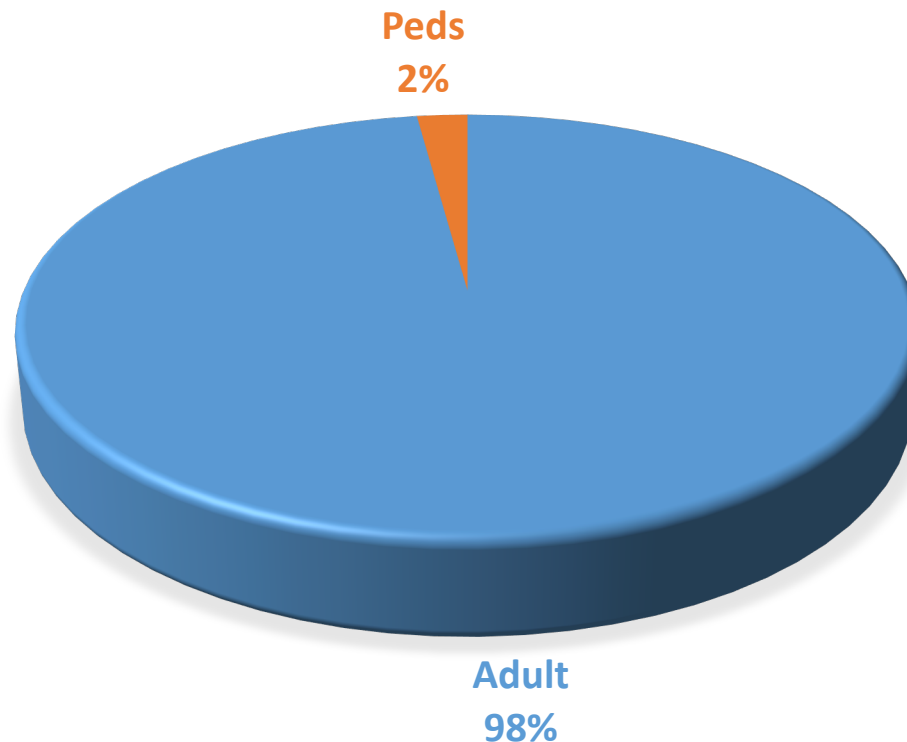
BIOSPECIMENS  
COLLECTED &  
BANKED



Inflammation, Microbiome & Alimentation  
Gastro-Intestinal & Neuropsychiatric Effects



# MAGIC | Cohort – Age Distribution



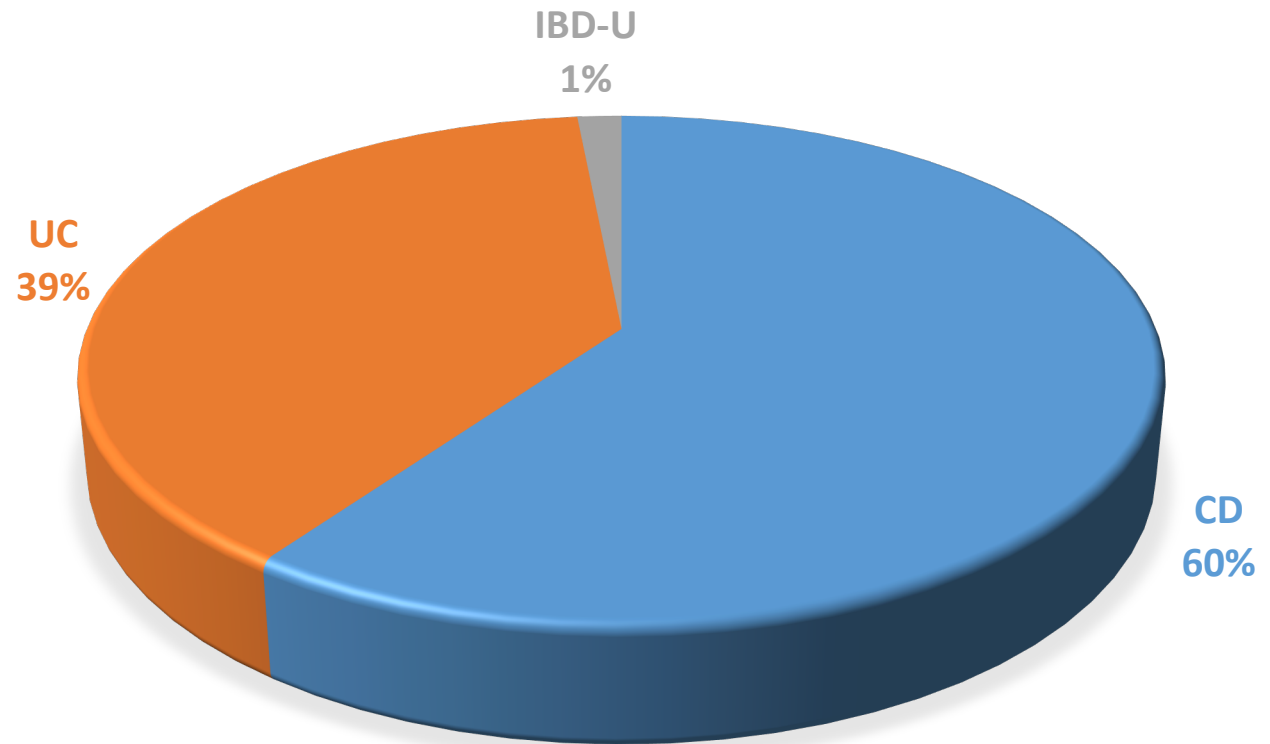
Disease Type	Age (Mean)	Age (Range)
CD	42.9	6 - 87
UC	43.9	5 - 84
IBD-unclassified	39.1	9 - 69
Healthy	52.9	8 - 85



# MAGIC | Cohort - IBD Classification

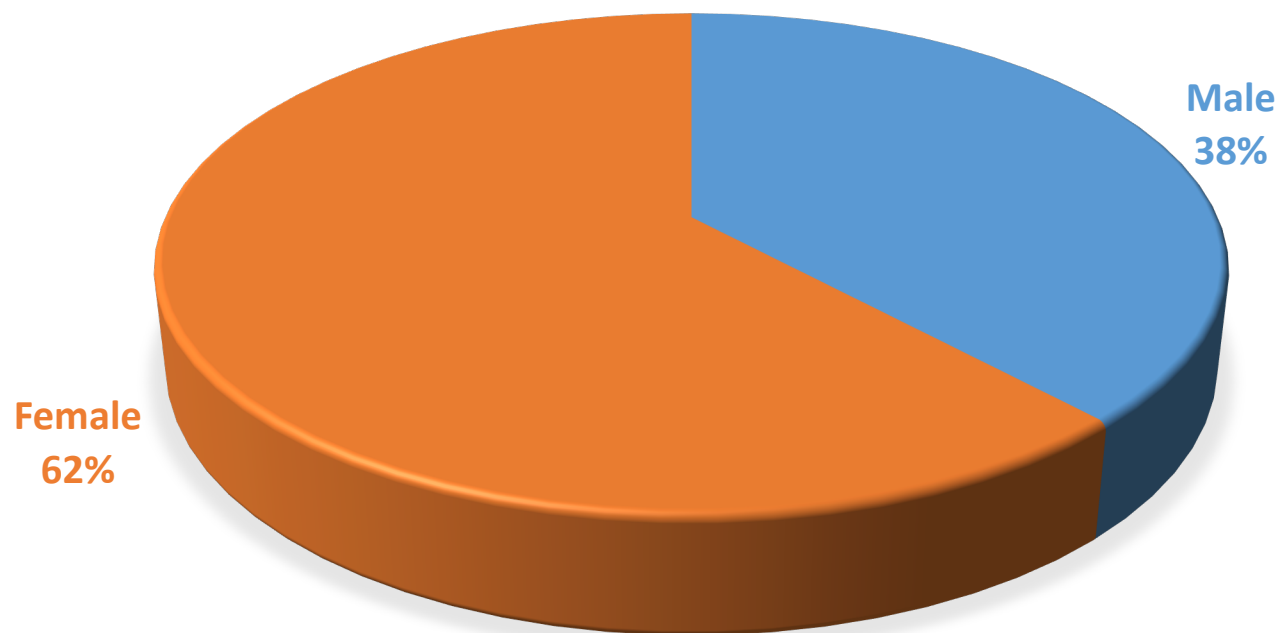


IBD CLASSIFICATION



# MAGIC | Cohort - Gender Classification

OVERALL COHORT - GENDER BREAKDOWN



Disease Type	Male	Female	%Male	%Female
CD	700	1052	40%	60%
UC	533	586	48%	52%
IBD-unclassified	16	29	36%	64%
Healthy	296	456	39%	61%



Inflammation, Microbiome & Alimentation



# Thank you Funding Partners | & Other Supporters



Inflammation, Microbiome & Alimentation Gastro-Intestinal & Neuropsychiatric Effects



[Canadian Association of Gastroenterologists](#)

[Canadian Digestive Health Foundation](#)

[Canadian Network of Mood and Anxiety Treatments \(CANMAT\)](#)

[Canadian Biomarker Integration Network in Depression](#)

Canadian Gastro-Intestinal Epidemiology Consortium (CanGIEC)

[IBD Genomic Medicine Consortium \(iGenoMed\)](#)

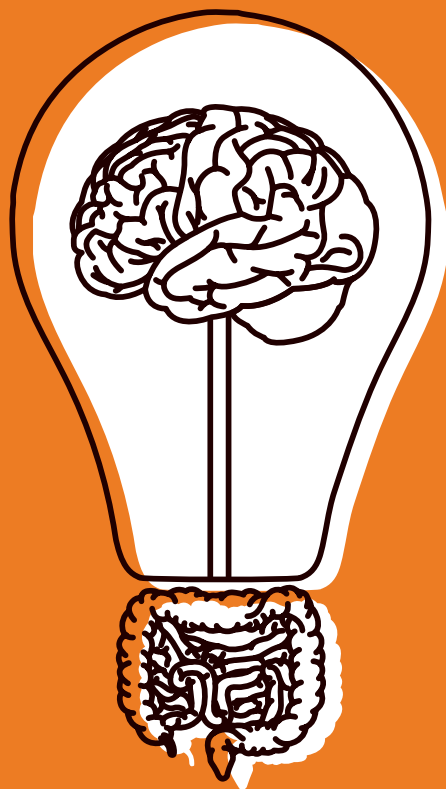
[Genetics, Environmental and Microbial \(GEM\) project](#)

[PaCER](#)

Maternofetal outcomes research –Canadian Registry in IBD (MORE CaRe IBD)

[Canadian Children Inflammatory Bowel Disease Network \(CIDsCaNN\)](#)

[Canadian Child Health Clinician Scientist Program \(CCHCSP\)](#)



# IMAGINE

Inflammation, Microbiome & Alimentation  
Gastro-Intestinal & Neuropsychiatric Effects

Strategy for Patient-Oriented Research

**SPOR**

*Putting Patients First* 

[www.imaginespor.com](http://www.imaginespor.com)



@IMAGINESPOR



@IMAGINE\_SPOR